

## Introduction

Please follow the instructions to install the driver for the **Xerox WorkCentre 5325**.

1. Install the driver
2. Configure the default Printing Preferences
  - a. Page Size
  - b. 2-sided Print

## Download

To download the printer driver click [here](#)

## Driver Installation

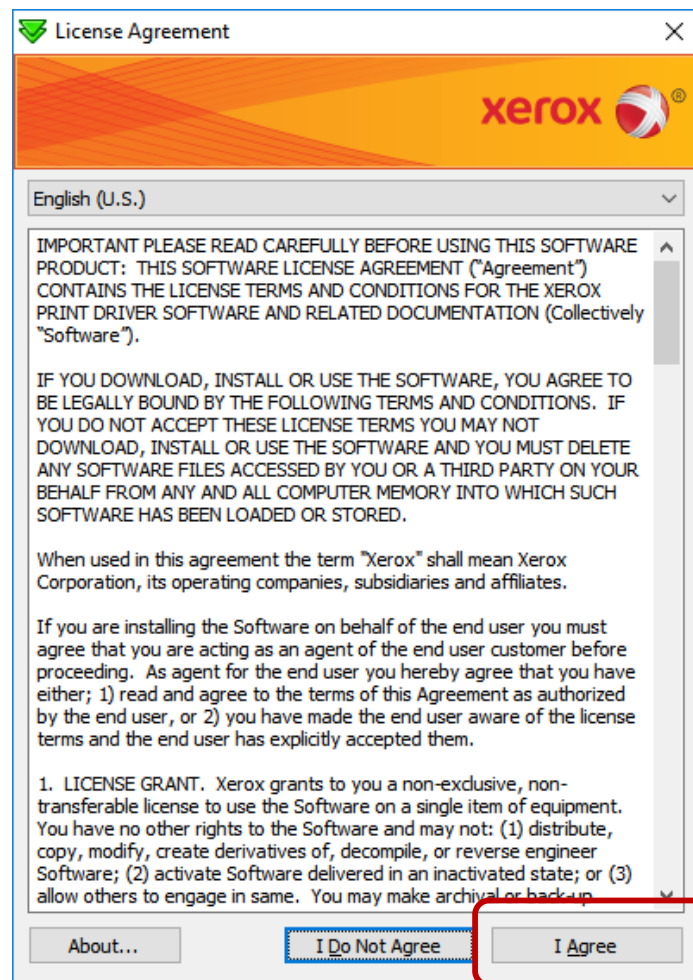


Figure 1: Accept License Agreement

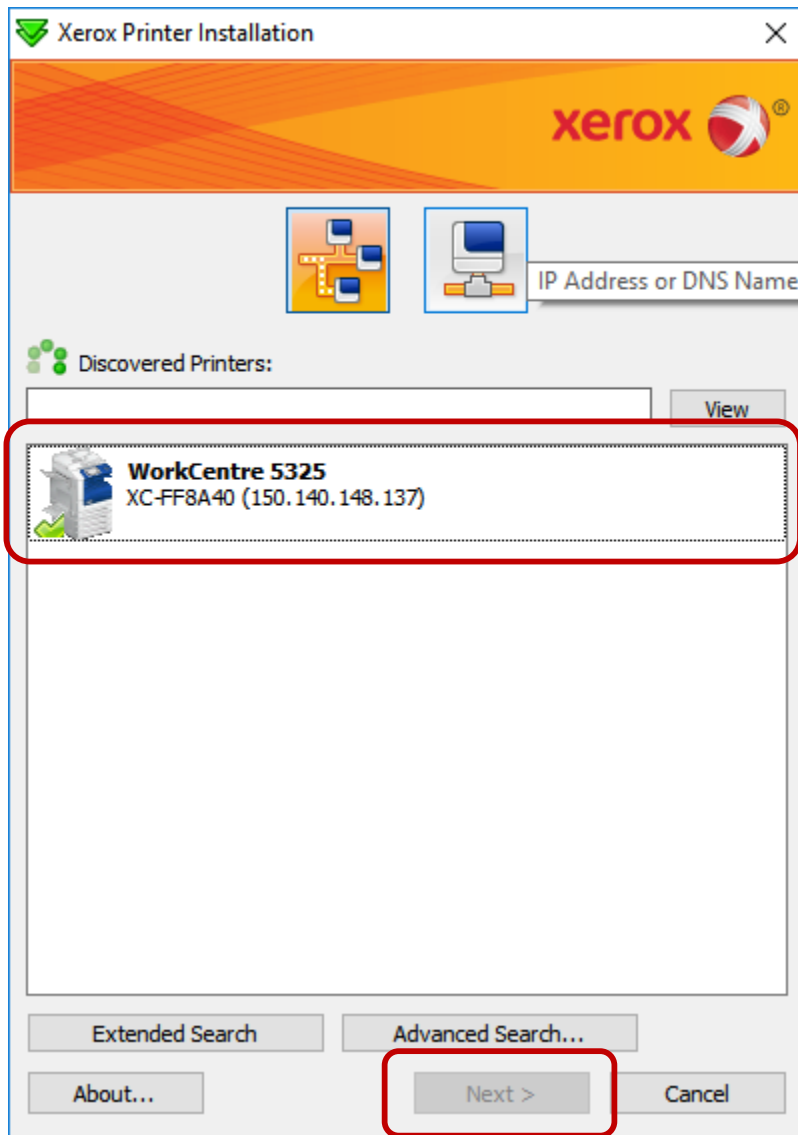


Figure 2: Discover print automatically or manually (150.140.148.137)

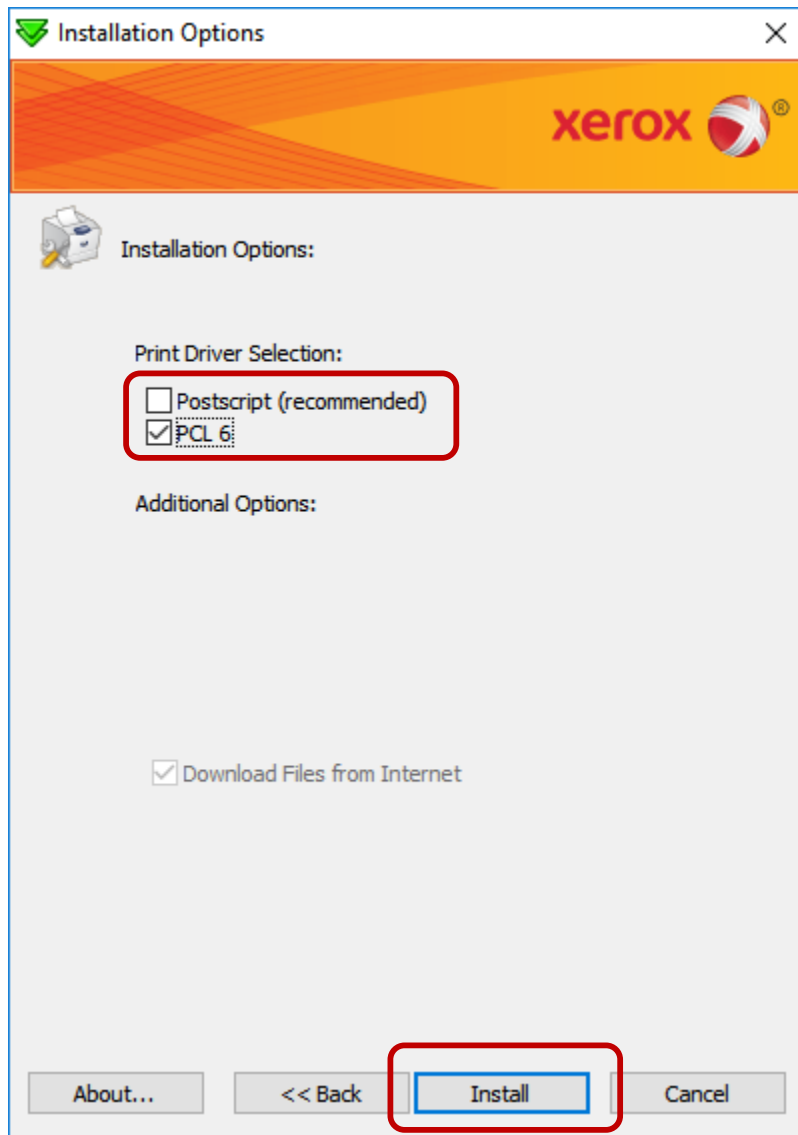
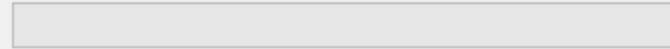


Figure 3: Check PCL6 option

Xerox Printer Installation



**Installing Printer...**



**Downloading Print Driver Files...**

Install Print Driver

Create print queue

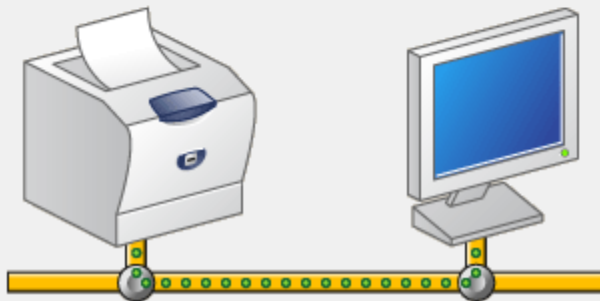


Figure 4: Installation Progress

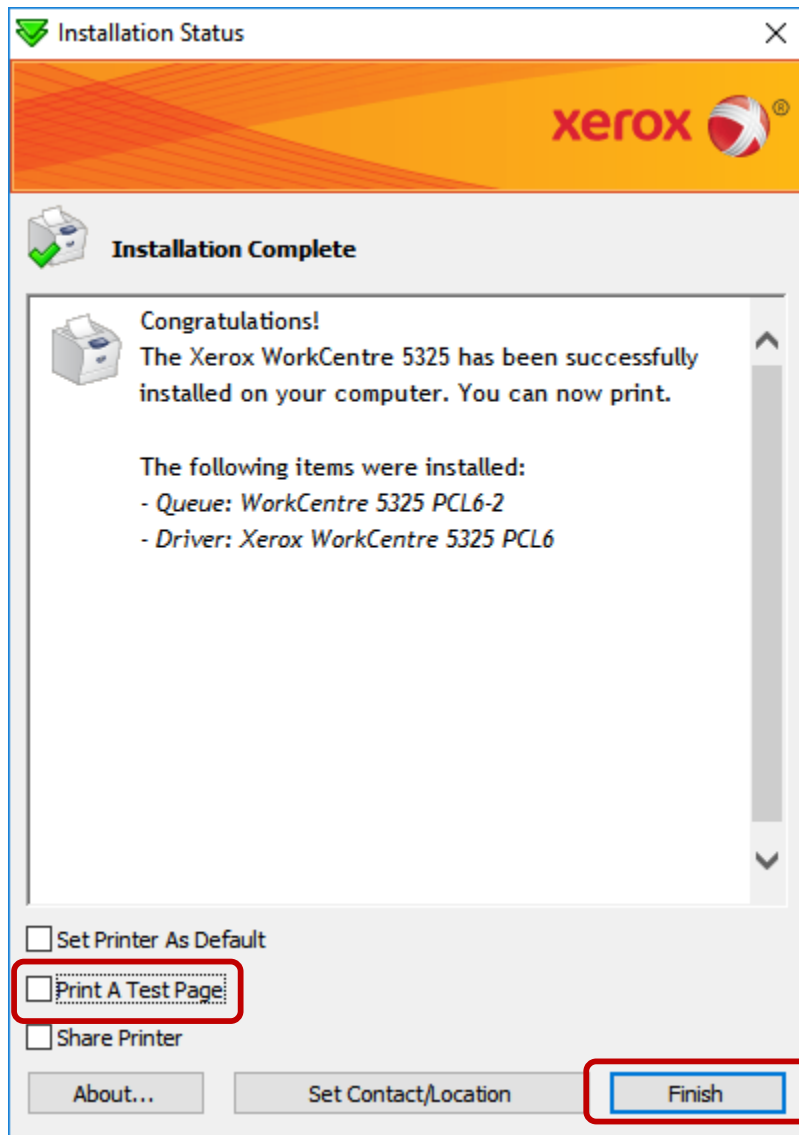
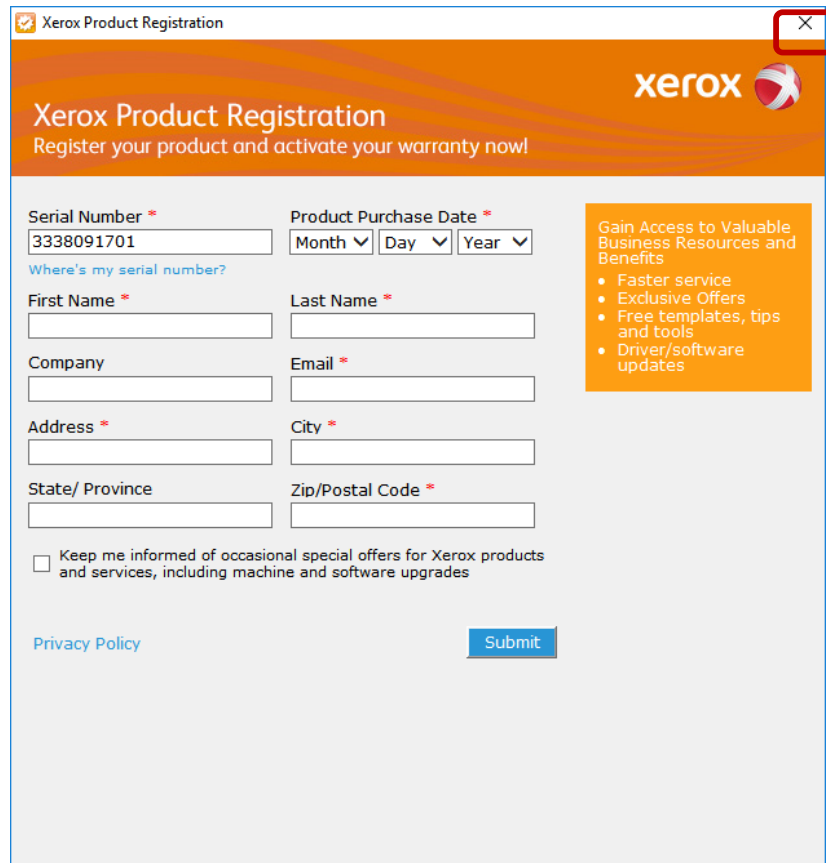


Figure 5: Complete Installation



The image shows a web browser window titled "Xerox Product Registration". The browser's address bar shows a checkmark icon and the text "Xerox Product Registration". In the top right corner of the browser window, there is a red square box highlighting the close button (X). The page has an orange header with the Xerox logo and the text "Xerox Product Registration" and "Register your product and activate your warranty now!". The main content area is a registration form with the following fields: "Serial Number \*" (text input with "3338091701"), "Product Purchase Date \*" (Month, Day, Year dropdowns), "First Name \*" (text input), "Last Name \*" (text input), "Company" (text input), "Email \*" (text input), "Address \*" (text input), "City \*" (text input), "State/ Province" (text input), and "Zip/Postal Code \*" (text input). There is a link "Where's my serial number?" below the Serial Number field. To the right of the form, there is a yellow box with the text "Gain Access to Valuable Business Resources and Benefits" and a list of benefits: "Faster service", "Exclusive Offers", "Free templates, tips and tools", and "Driver/software updates". At the bottom of the form, there is a checkbox "Keep me informed of occasional special offers for Xerox products and services, including machine and software upgrades" and a "Submit" button. A "Privacy Policy" link is also present.

Xerox Product Registration

Xerox

Xerox Product Registration  
Register your product and activate your warranty now!

Serial Number \*  
3338091701  
[Where's my serial number?](#)

Product Purchase Date \*  
Month ▼ Day ▼ Year ▼

First Name \*  
Last Name \*

Company  
Email \*

Address \*  
City \*

State/ Province  
Zip/Postal Code \*

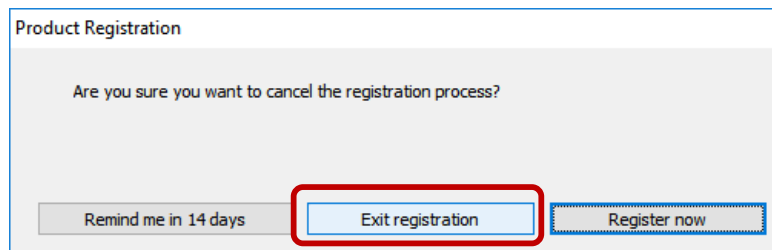
☐ Keep me informed of occasional special offers for Xerox products and services, including machine and software upgrades

[Privacy Policy](#) [Submit](#)

Gain Access to Valuable Business Resources and Benefits

- Faster service
- Exclusive Offers
- Free templates, tips and tools
- Driver/software updates

Figure 6: Skip registration page by clicking (X)



The image shows a dialog box titled "Product Registration". It contains the text "Are you sure you want to cancel the registration process?". At the bottom, there are three buttons: "Remind me in 14 days", "Exit registration", and "Register now". The "Exit registration" button is highlighted with a red square box.

Product Registration

Are you sure you want to cancel the registration process?

Remind me in 14 days [Exit registration](#) [Register now](#)

Figure 7: Exit Registration

## Configuration

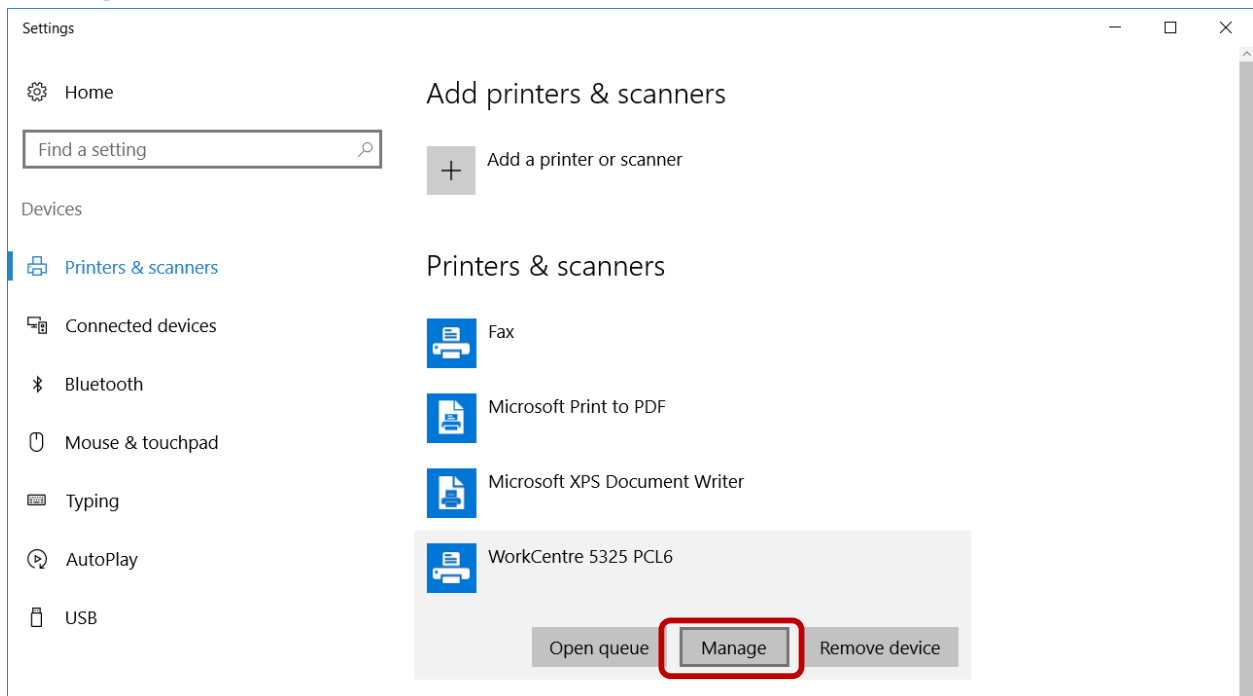


Figure 8: Click Manage for the WorkCentre 5325 PCL6 Printer

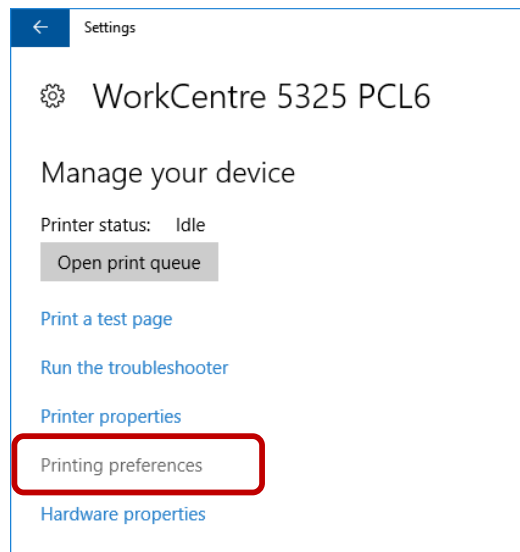


Figure 9: Click Printing Preferences

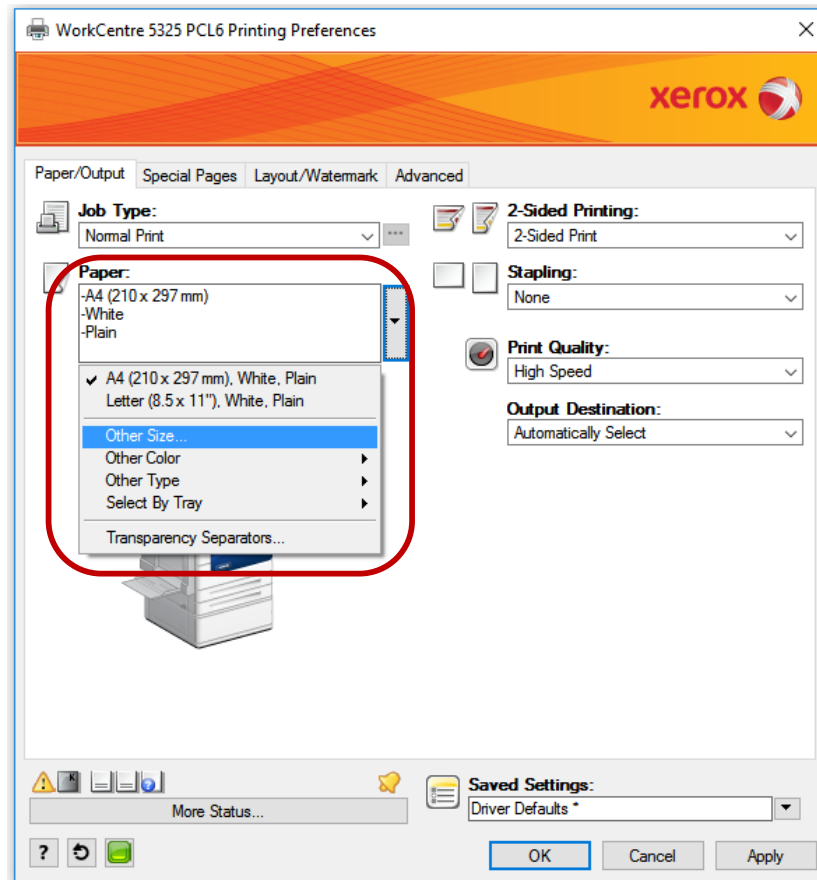


Figure 10: Change Page Size to A4



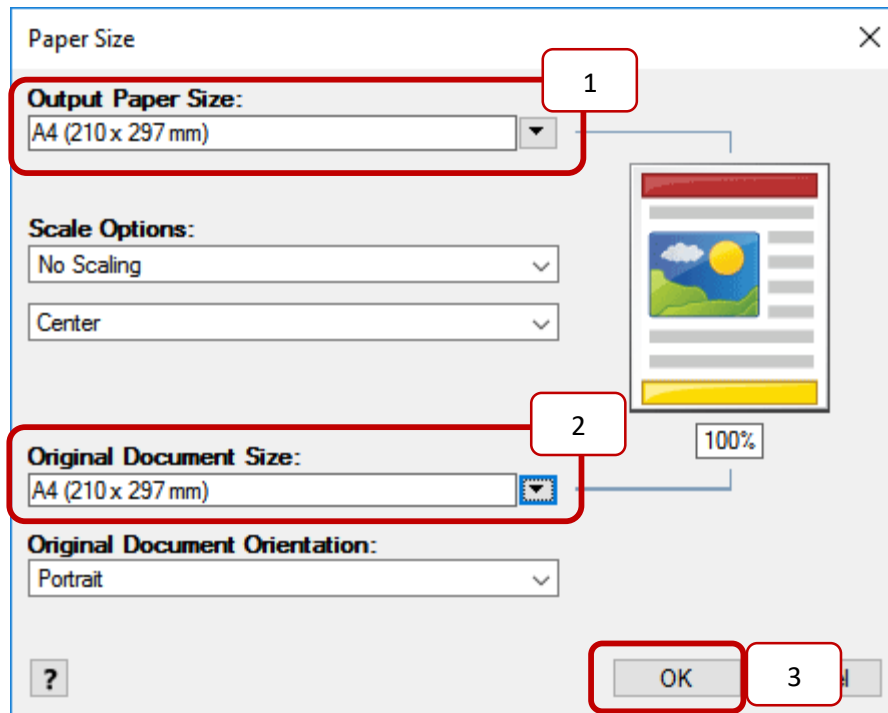


Figure 11: Change Original Size to A4 and click OK

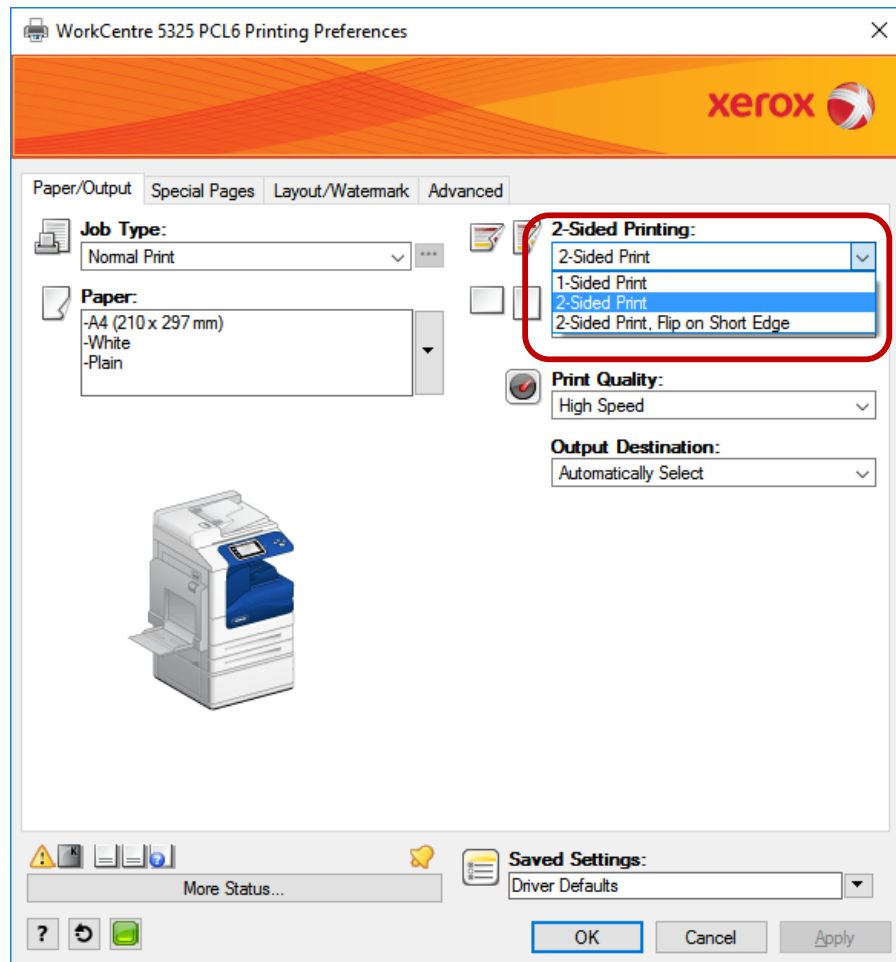


Figure 12: Change 2-sided Printing

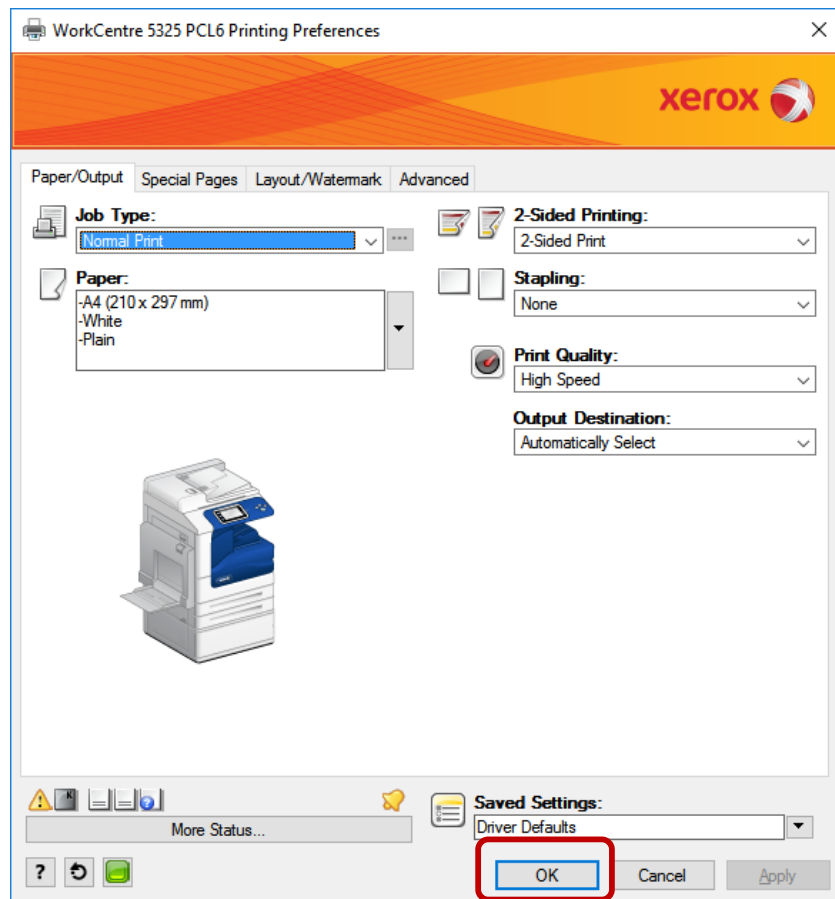


Figure 13: Click OK to store default settings